

gronograss

gronodec

gronofence

gronoclad

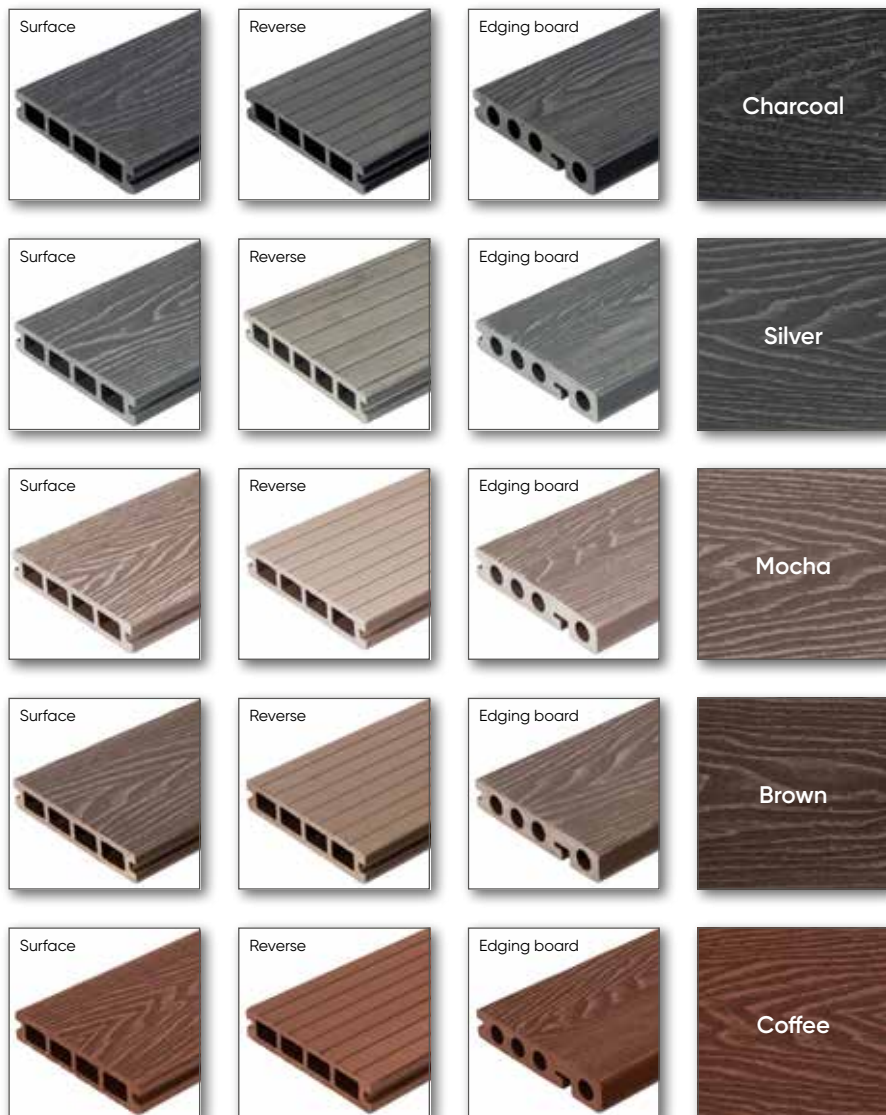


gronodec

install guide



Gronodec Premier • Width 136mm, length 3.66m, depth 25mm



Our Gronodec Premier range of eco-friendly composite decking boards are beautifully realistic, yet won't deteriorate in the harsh weather - unlike the real thing. Which means you get more time to enjoy your outdoor spaces rather than maintaining them.

Made out of wood from sustainably managed sources combined with 100% recycled plastic - you will find our composite decking boards are both extremely hard wearing and very gentle on the environment.

Easy to install and very low maintenance Gronodec is available in wide variety of naturally inspired colour schemes and comes with the added benefit of a 25 year warranty.

How many decking boards will you need?

- Work out the total area to be covered in square metres.
- Multiply this figure by 7.
- Multiply the result by a further 1.15 (for Gronodec Premier) or 1.2 (for Gronodec Rustic) to allow for tolerance.
- Divide this number by 3.66 and round the figure up to the nearest whole number for the total amount of boards required.

Gronodec Rustic • Width 148mm, length 3.66m, depth 25mm*



Gronodec Rustic redefines superior quality with its combination of the ultimate in high-performance durability found in Gronodec Premier, with the unique appearance of beautiful naturally-aged wood.

*Rustic Edging Board Width 136mm.



Tools Required • The essential checklist to get the job done



Circular Saw



Power Drill



Tape Measure & Pencil



Rubber Mallet



Spirit Level



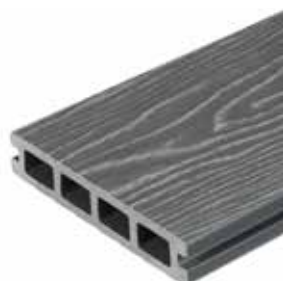
Safety Glasses



Safety Gloves

Don't forget
your drill bits
and
driver bits.

Components • Everything you need to install your new Gronodec



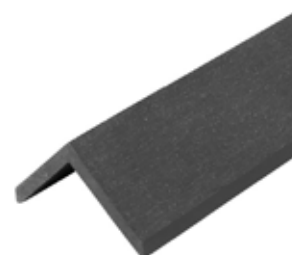
Gronodec
decking board



Starter clips
(packs of 50)



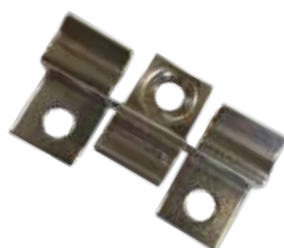
Screws
(supplied with clips)



Colour coded
Edging/L trim



Gronodec
edging board



Centre clips
(in packs of 100)



Colour coded
end caps

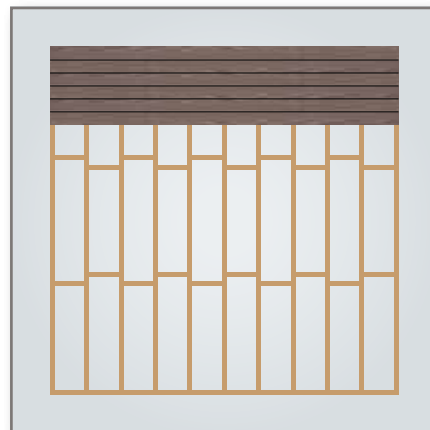
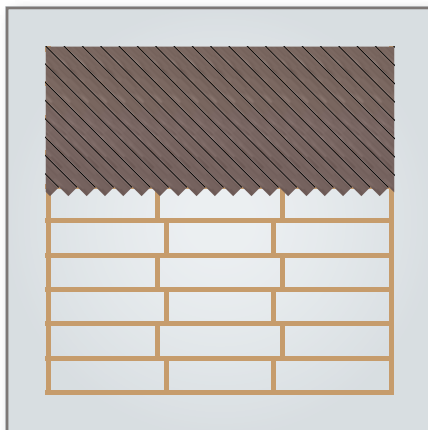
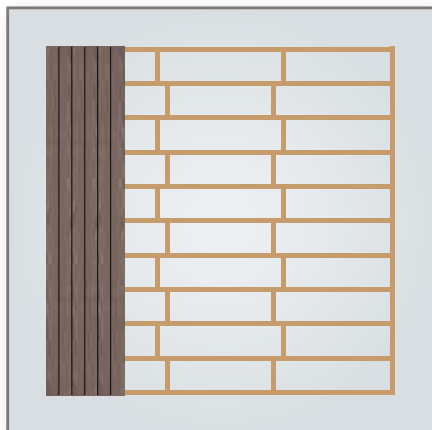
Make sure you have
enough clips.

You will need up to:

12 starter clips per board
(first and last boards).

12 centre clips per board.

Preparation • Constructing the framework to support your decking

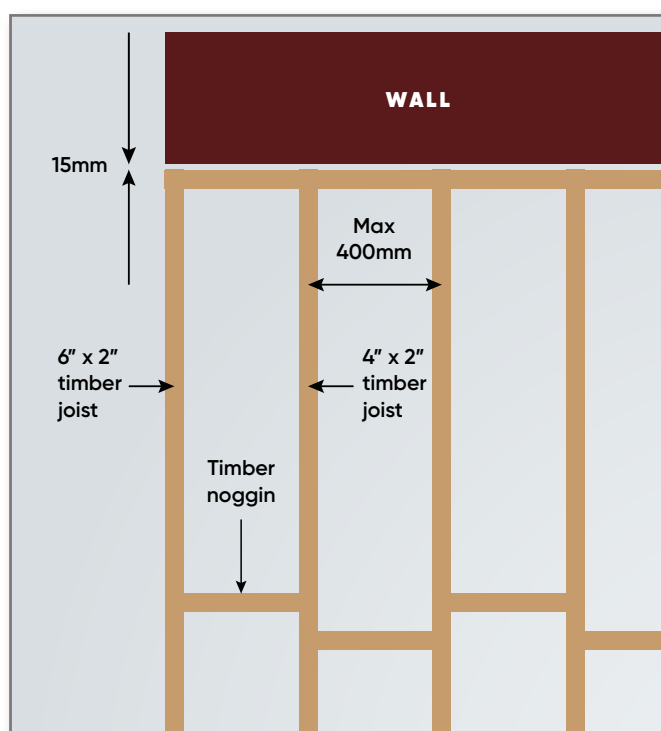


Step 1

Once you have chosen the direction to lay your Gronodec, you will need to construct a framework using tanalised timber to support the decking.

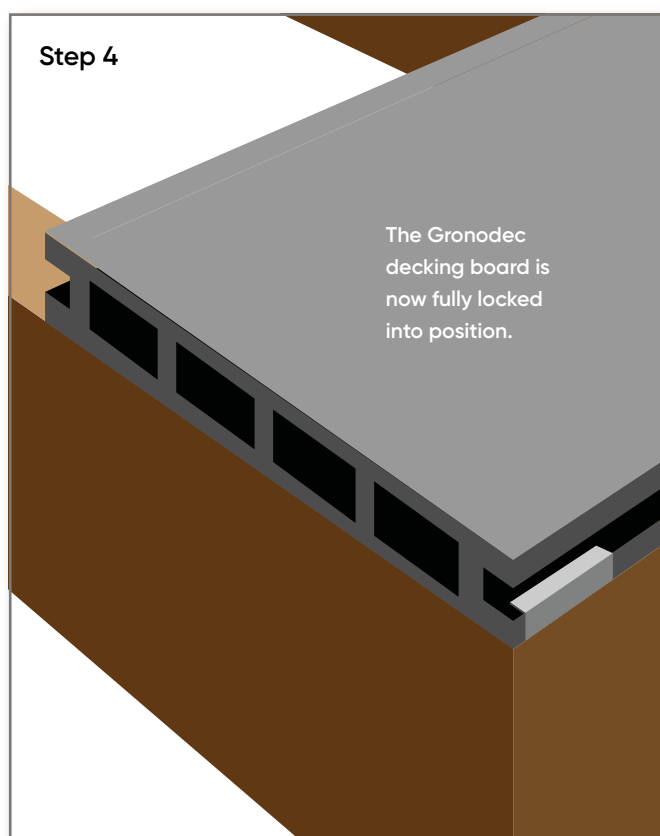
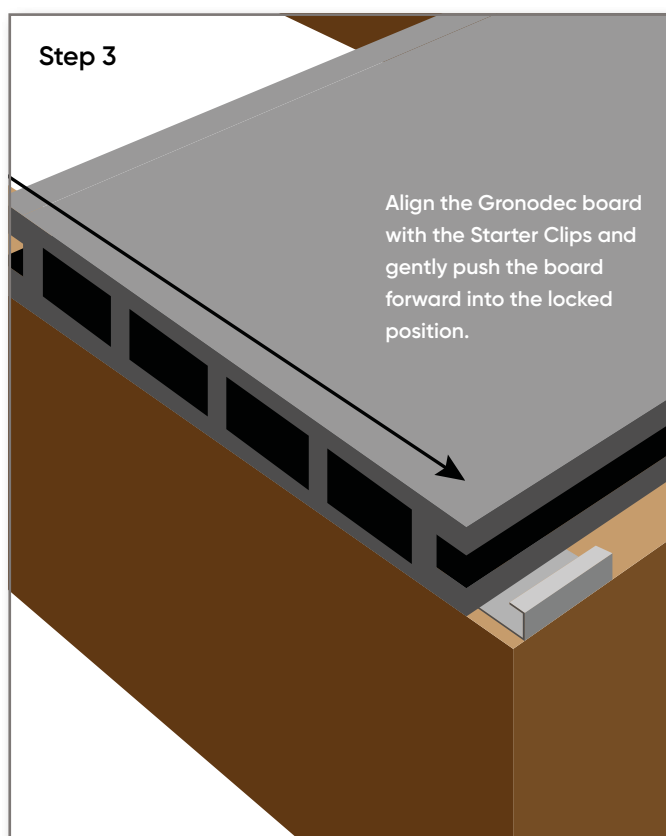
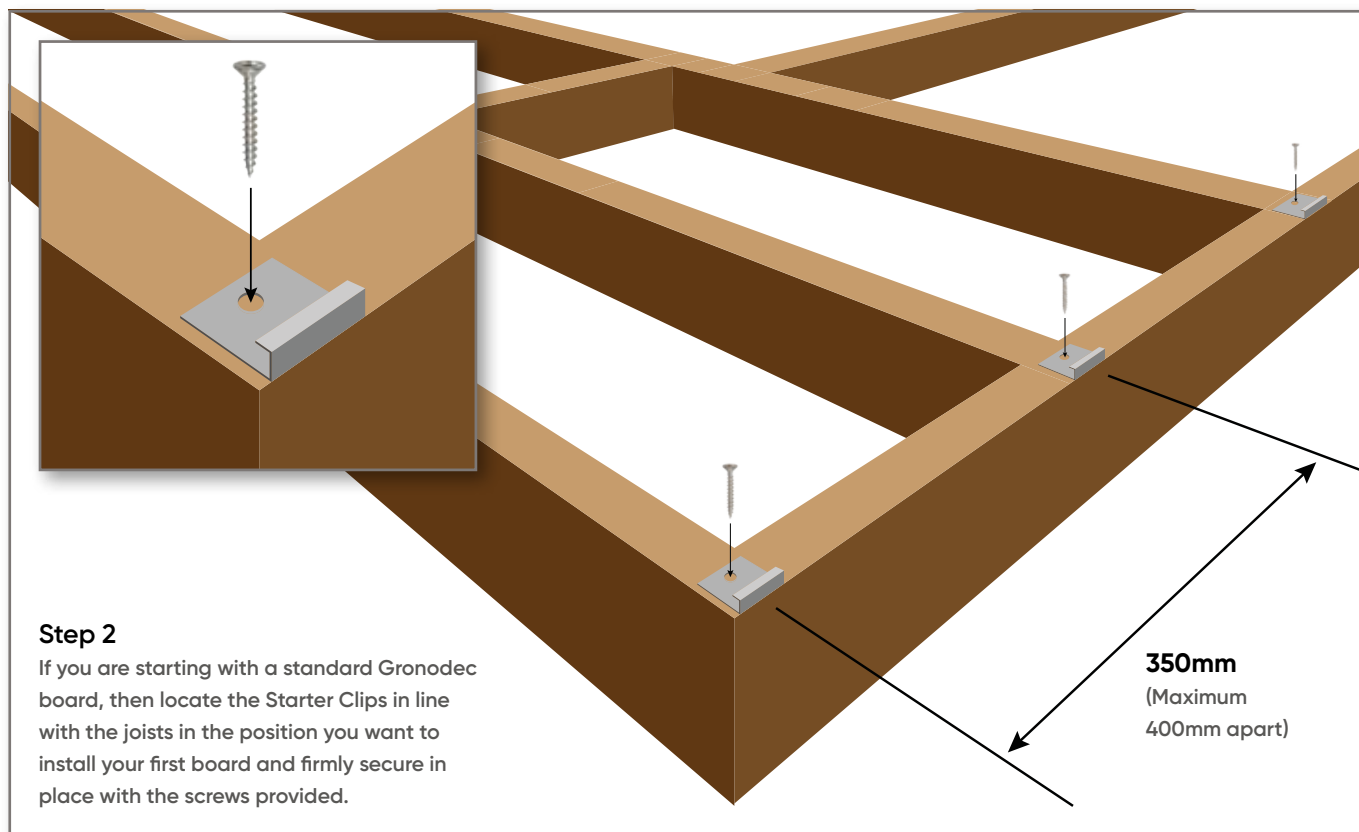
We recommend the following:

- Use 6" x 2" joists for the perimeter of the frame.
Use 4" x 2" joists within the centre of the frame.
- If the decking is to be installed above open earth then we would advise covering the area beneath the decking with an anti-weed membrane to stop the growth of weeds etc.
- We would advise using stainless steel or galvanised screws to secure the framework as these are specifically designed for outdoor use and will resist corrosion.
- Leave a 15mm gap between the edge of the framework and any adjoining walls to allow for air flow and heat expansion.
- We recommend a maximum of 400mm between joist centres (reduced to 350mm for areas of high traffic and heavy loading), secure the joists in position with timber noggins for extra rigidity.
- When levelling the framework, we recommend creating a slight slope of 2 degrees to assist with water run off.

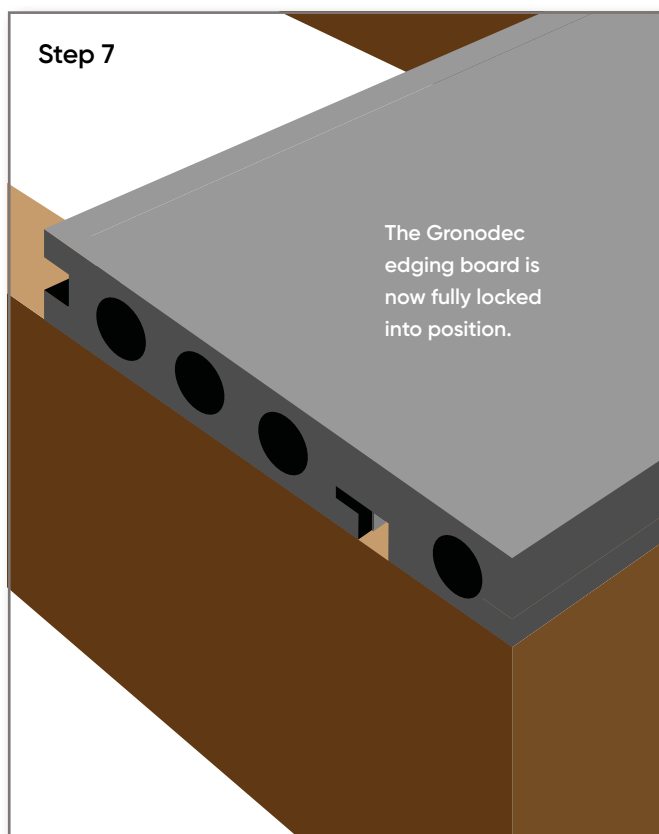
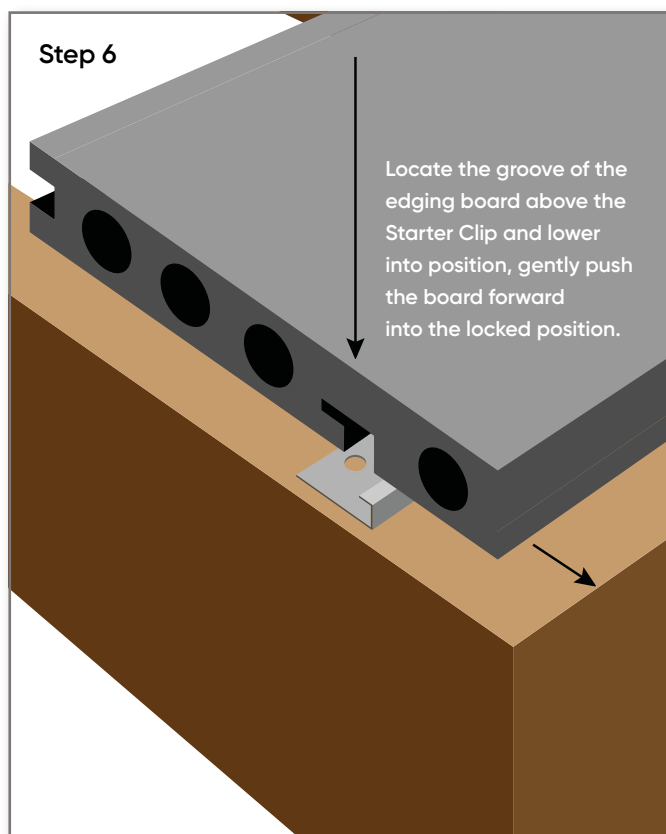
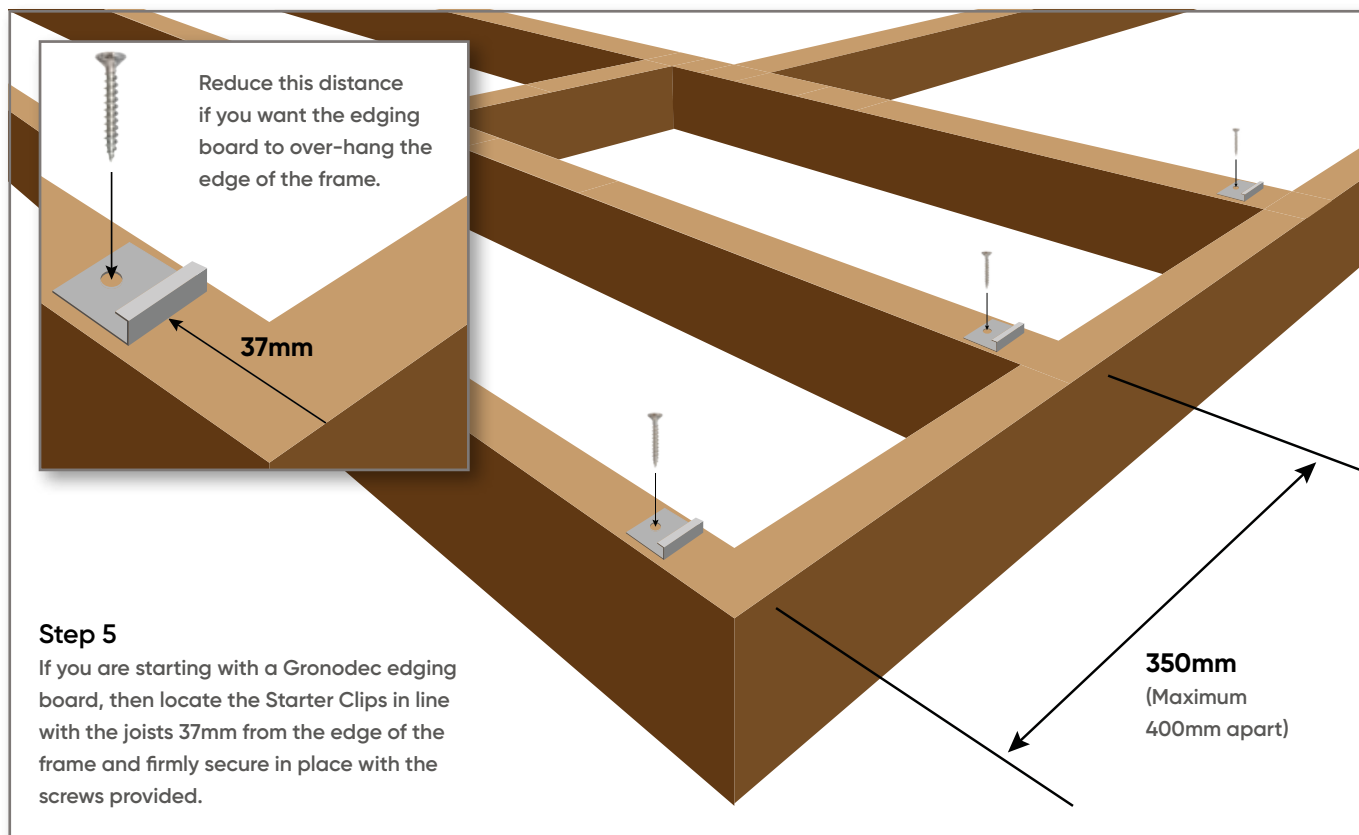


Photos courtesy of Matipo Landscaping + Design • www.matipolandscaping.uk

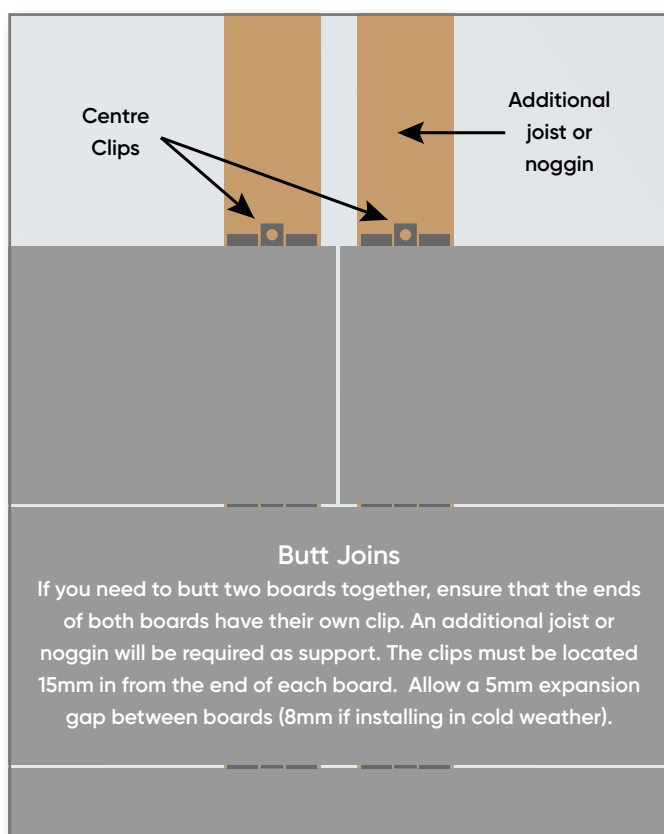
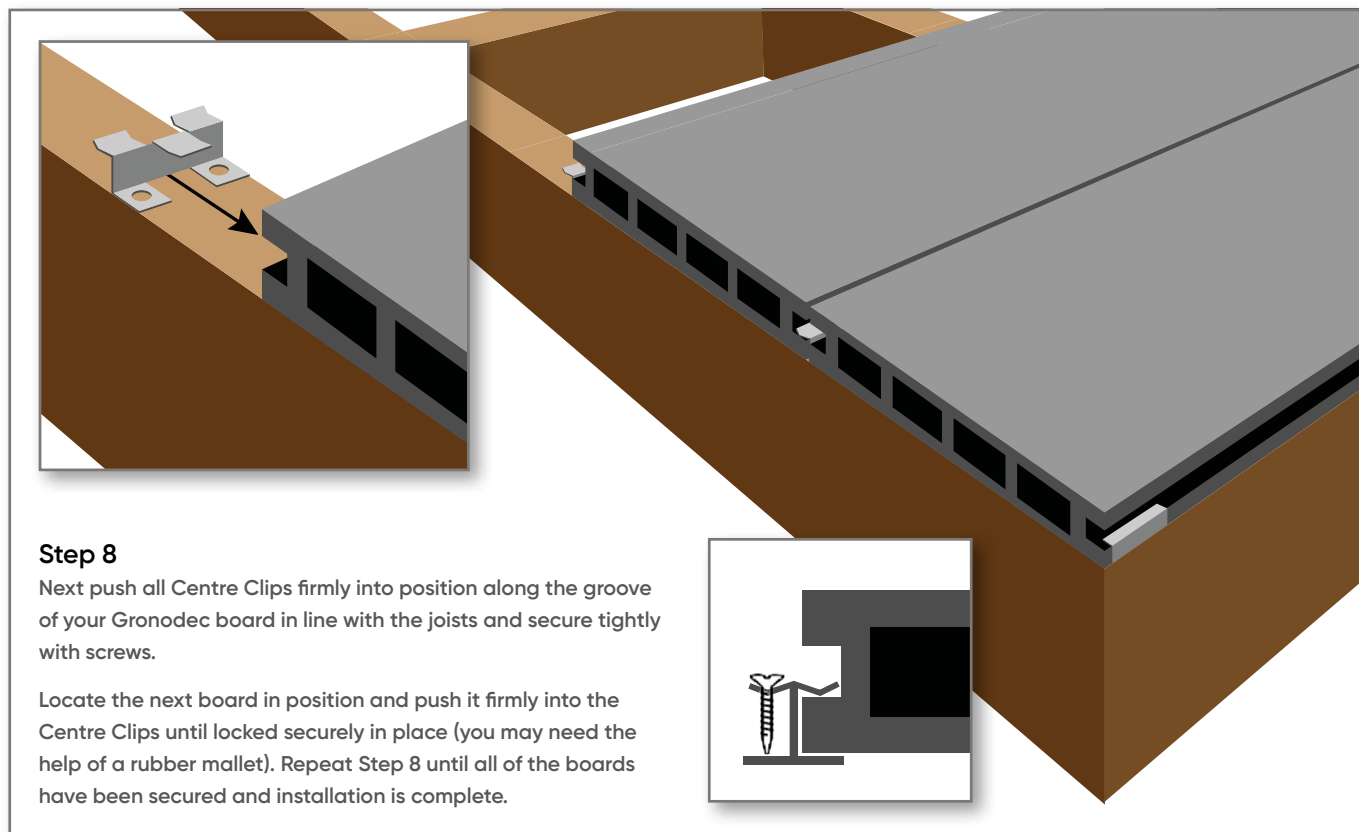
Installing your decking • Starting with a standard Gronodec board



Installing your decking • Starting with a Gronodec edging board



Installing your decking • Completion and edging techniques

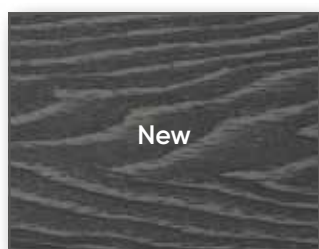


Care & Maintenance • Keeping your Gronodec looking its best

The Gronodec range of eco-friendly composite decking boards are very hard wearing and low maintenance by nature. With only minimal effort you can keep your outdoor living spaces looking absolutely stunning all year round whatever the weather.

Gronodec is made out of 55% natural hardwood fibre obtained from sustainably managed sources, combined with 35% recycled plastic (100% fully recycled) plus 10% additives - which includes colouring and a UV stabiliser which helps your Gronodec remain relatively fade resistant.

After installation you will notice some slight lightening in terms of colour, this is only natural and after approximately 10 weeks of weathering the colour will stabilise:



New



After 10 weeks

Your Gronodec will retain its appearance if you keep it dry, clean and free from the build up of natural dirt and grime. If you do this you will find that your Gronodec will only require very minimal maintenance. Using proper safety precautions, you can wash your Gronodec using a soft brush and warm soapy water or if you wish you can use a power washer (max. pressure 1500psi). Ensure that you spray in line with the direction of the boards using a fan nozzle at a minimum of 6 inches from the surface using an appropriate cleaning product.

Even though your Gronodec is formulated to resist staining and the growth of mildew, if your Gronodec is constantly exposed to excessive moisture and the build up of dirt and grime, some staining can naturally occur.

You can remove most regular stains such as those caused by greasy food with warm water and soap, or a household degreasing product. For best results scrub and soak the affected area as soon as the stain occurs then rinse well with warm water. For more stubborn stains it is advisable to use a specific cleaner for composite wood (widely available at many DIY outlets) always follow the instructions and test first on an inconspicuous area.

As with any outdoor surface that you walk upon, over time there are bound to be some light surface scratches visible. These can be removed with a light sanding using a 60 to 80 grit sandpaper or a wire brush. Gently sand or brush in the direction of the grain of the decking until the scratch is no longer visible - this method can also be used on more stubborn stains. Any area that you treat will appear lighter in appearance once complete, but you will find that after approximately 10 weeks of weathering this will become virtually unnoticeable.

If you have any questions then please feel free to email or call using the contact details below.



For warranty details please visit:
www.grono.co.uk/warranty



Grono, Unit 5, Guinness Road Trading Estate, Manchester M17 1SB

sales@grono.co.uk • 0161 877 0929 • www.grono.co.uk